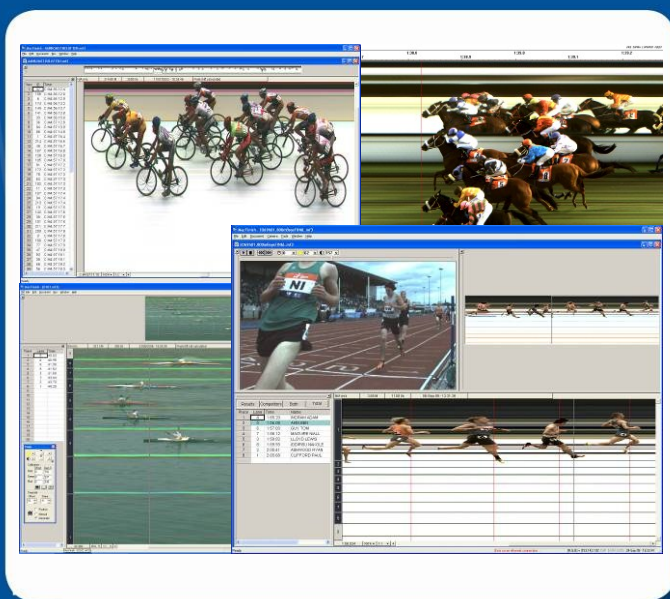


## MacFinish Software



SPORT TIMING SYSTEMS



TimeTronics NV  
Lammerdries-Oost 23B  
B-2250 Olen, Belgium

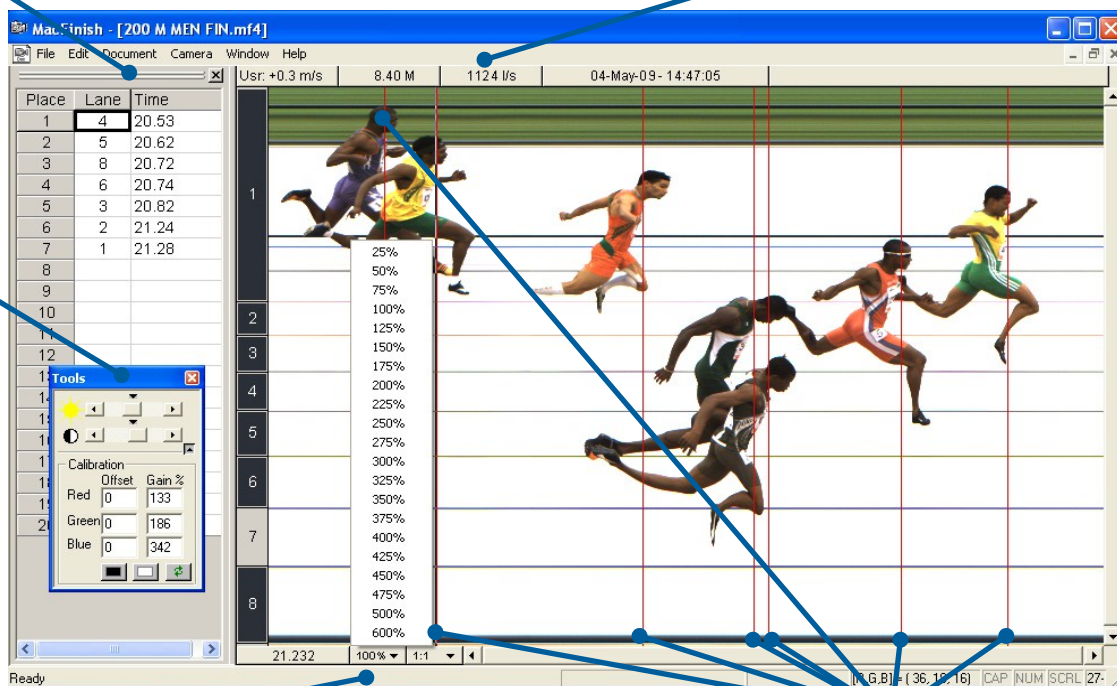
[www.timetronics.be](http://www.timetronics.be) - [info@timetronics.be](mailto:info@timetronics.be)

Hide or show **Result Table**: IMMEDIATE results; selection of lanes, hip or ID numbers. Times automatically rounded according to the rules of each individual sport.

Additional **photo-finish information**: windspeed result (if required and if windgauge connected), image memory, recording speed indication, date, hour and possible titling.

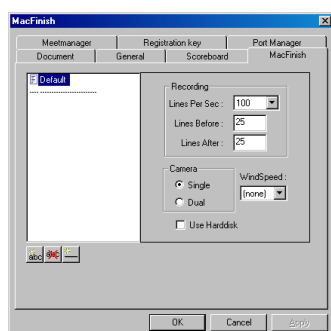
The MacFinish software provides a **Tools Window** to edit the photo-finish picture in **light intensity and contrast** by means of slide bars. This comes in handy when using artificial light and /or in the event of rapid changes in weather conditions.

The picture can also be **colour-calibrated** automatically or manually via a calibration extension.

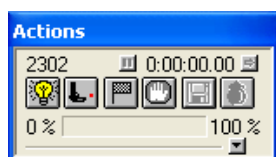


**Zoom-selection** from 25% to 600% in both horizontal and/or vertical ways by clicking on the appropriate arrows.

By pinpointing the **cursor** (vertical time line), the computer associates the exact time and displays it in the left-hand bottom corner of the photo-finish screen.



The race and recording-settings can at all times be changed in the **Parameter Window**. In order to facilitate and to limit the operations between the races, all parameters can be **pre-defined** in the **Preferences Window**.



The 'Action' window will always be visible on your computer screen for as long as the program is activated and the MacFinish 2D-USB camera is connected. It is used to control the race recording, and displays the timer.



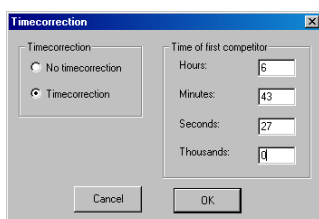
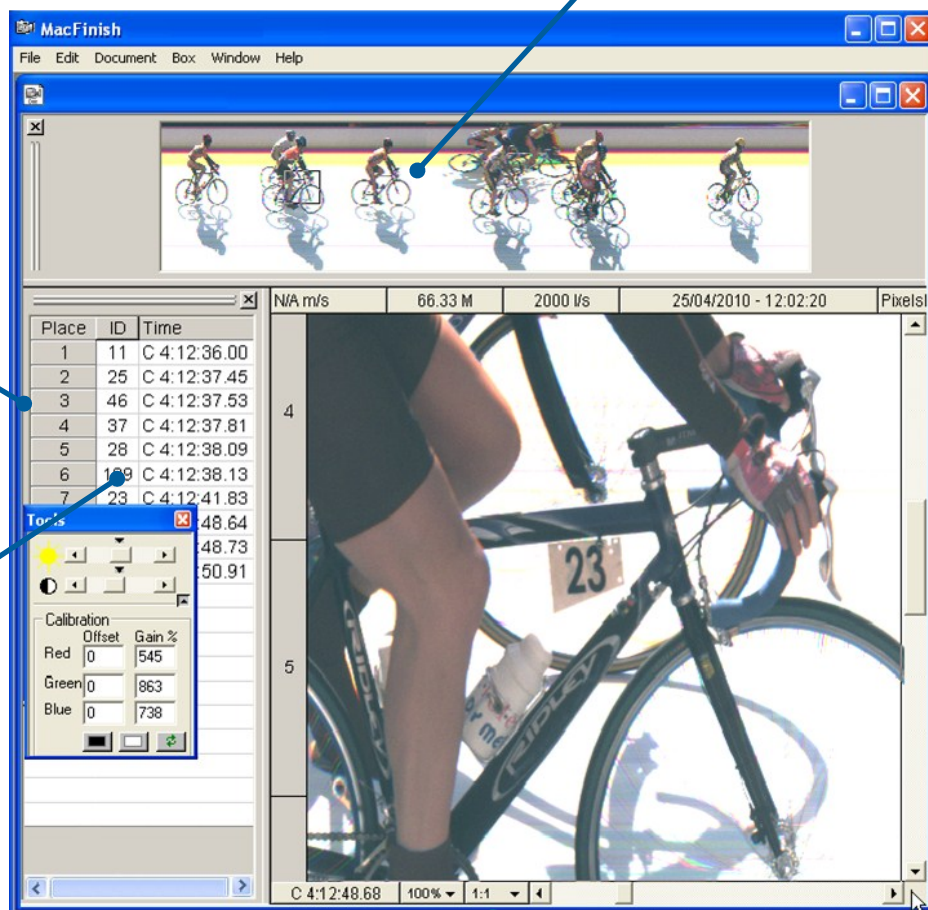
Results		Competitors		Both	Total
Place	ID	Lane	Time	Name	Information
1	14	2	12.30	MARINE GHAZARYAN	Sen,2001,ARM
2	35	7	12.42	YULIYA TISHKOVA	Sen,2001,AZE
3	139	5	12.66	MARIKA INASHVILI	Sen,2001,GEO
4	1	6	12.68	MONIKA BAKLLAVA	Sen,2001,ALB
5	51	4	12.98	DIJANA KOJIC	Sen,2001,BIH
6	185	3	DNS	ALEKSANDRA VOJNEVS	Sen,2001,MKD

The **Overview Window** offers the operator a complete overview of the entire photo finish picture. The operator can navigate through the picture by scrolling in the picture window or by simply selecting a part of the photo finish picture in the Overview Window, by simply clicking on it.

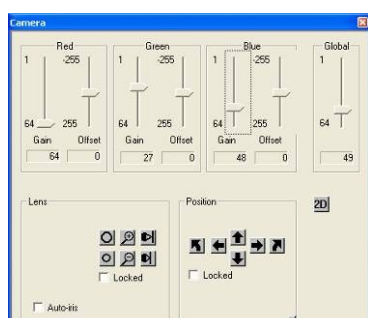
The **Result Table** has some **extra features** such as: An automatic and live connection between the MeetManager program can be chosen so that the operator can not only read the 'Place & ID/lane & Time' but also complete race information as athlete and team names.

The 'Time' column in the Result Table can be configured as follows: Absolute Time – Relative Time To First – Relative Time To Previous.

The **Time Offset Correction** option allows the operator to give a predefined time to the first competitor, and which then calculates the race times for all following competitors. An extra option specially designed for cycling on the road, and which is protected from misuse for other sports.



With this menu the operator can change the Hor/Vert shape of the photo so that all objects look more natural; e.g. wheels are round instead of oval.



Through the **Camera Window**, the operator can adjust the optics (motorized iris control) and the remote controlled camera head (both optional). Basically, this allows him to align the camera and to do the fine-tuning of lens and camera head from sitting behind the computer, and checking the result in the Preview Window.

Next to the lens and camera alignment control buttons, the operator has the ability to digitally adjust the RGB sensitivity of the CCD sensor. As the result, the operator can easily and efficiently anticipate to large changes in the light conditions, and calibrate all colours.



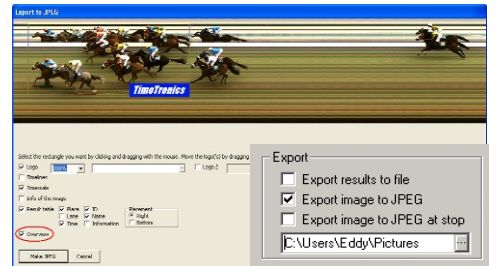
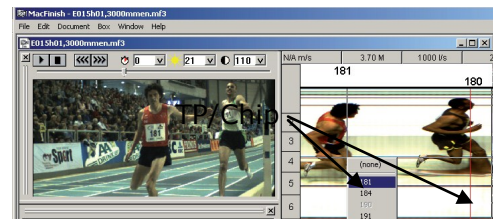


### Transponder and chip import

Easily import the data from transponder or chip timing systems. Combine the advantages of automatic identification by transponder or chip systems with the visual, indisputable MacFinish image. Faster interpretation of the photofinish image will be possible.

### Auto Jpeg for photo finish publication

Once set in the preference window the MacFinish software will create automatic a Jpeg file which you can use for web or other applications.

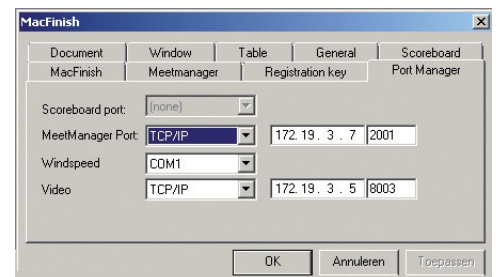


### Athletics Manager data import before a race

Even before the race you can import the race data information from the Athletics Manager if available. With this functionality you can gain some extra time after the race. You will be able to start faster the interpretation of the MacFinish image!

### Ethernet link with Athletics Manager

Today the link between the Athletics Manager and the MacFinish software can be done by a serial connection or network connection. The advantage of the network connection is that all information goes over an Ethernet cable, no serial port or USB to Serial converter are needed anymore!



### Video Athlete Identification

A high resolution digital camera is placed 3 to 5 meters behind the finish line and connected with the photofinish computer. The finish video is taken automatic together with the photofinish image so the operator can concentrate on the race itself. Once the operator reads out the photofinish image, the video file is imported in the MacFinish software. From this moment the MacFinish operator has the MacFinish image + a 2-dimensional video of the finish on his computer screen, to visualize the athlete bib numbers for a fast and correct athlete identification. The video window AUTOMATICALLY synchronises to the selected athlete in the photofinish window. Zooming in the video window is also possible.

